



Upper Market Street, Hove, BN3 1AS  
**Offers In The Region Of £875,000**



**GOLDIN  
LEMCKE**

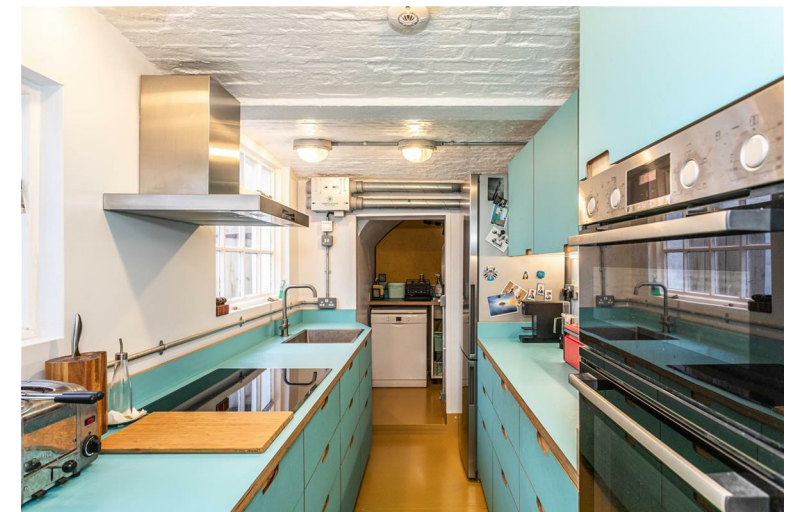
01273 777123  
GOLDINLEMCKE.COM

SELLING HOMES  
IN BRIGHTON  
& HOVE  
SINCE 2002

# Upper Market Street, Hove, BN3 1AS

## Offers In The Region Of £875,000

A substantial four/five-bedroom Regency townhouse arranged over five floors, ideally situated in the heart of the highly sought-after Brunswick Town Conservation Area. Offering spacious and versatile accommodation throughout, the property presents an excellent opportunity for a range of buyers. Early and internal viewing is highly recommended.





## Further Information

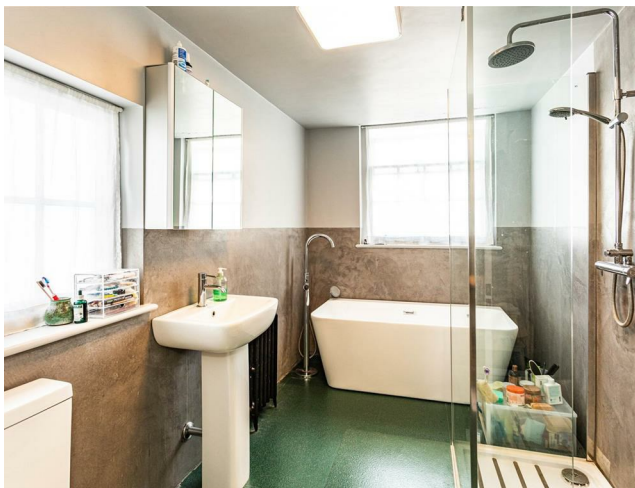
A substantial four/five-bedroom townhouse built in the late Georgian era arranged over five floors, ideally situated in the heart of the highly sought-after Brunswick Town Conservation Area. Offering spacious and versatile accommodation throughout, the property presents an excellent opportunity for a range of buyers. Early and internal viewing is highly recommended.

The accommodation comprises a spacious living/dining room with a bow window and log burner, a study, and a separate WC on the ground floor. Stairs lead down to the lower ground floor, where there is a generous second reception room, ideal as a family room or dining space, which opens through to the fitted kitchen and provides access to the rear patio. The first floor offers two double bedrooms and a large family bathroom, while the second-floor comprises two further double bedrooms, one of which has the planning granted and in place for the installation of a second bathroom, subject to any further necessary consents. A fifth double bedroom occupies the top floor.

To the rear, a small west-facing patio provides an attractive outdoor seating area and benefits from gated access onto Brunswick Street East.

This charming period home retains a wealth of original features, including decorative ceiling cornicing, wooden floorboards and woodwork, enhancing its character and appeal. Rarely available in such a central location, the property offers considerable flexibility and potential, and viewing is essential to fully appreciate all it has to offer.

Upper Market Street is perfectly positioned just moments from Western Road, with its excellent selection of shops, cafés, bars and restaurants. Brighton seafront and promenade are within easy walking distance, while Churchill Square is also close by. The area is exceptionally well connected, with regular bus services throughout Brighton & Hove and convenient access to both Brighton and Hove mainline railway stations.



**GOLDINLEMCKE**

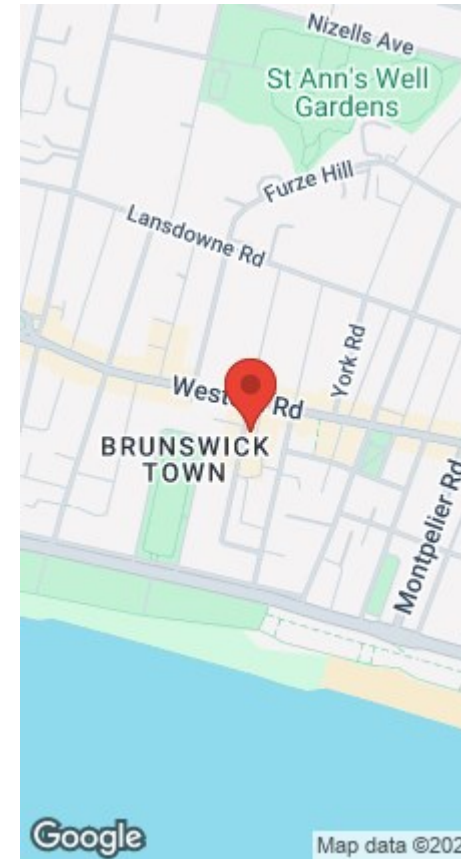
**01273 777123**  
GOLDINLEMCKE.COM

# Upper Market Street, Hove, BN3 1AS

Approximate Gross Internal Area = 173.2 sq m / 1864 sq ft  
(Excluding Store / Patio Garden)



Illustration for identification purposes only, measurements are approximate, not to scale.  
Imageplansurveys @ 2026



## GOLDIN LEMCKE

01273 777123  
GOLDINLEMCKE.COM

## SELLING SOMETHING SIMILAR?

Get in touch for a free, no obligation valuation.

Call 01273 777123 or email [property@goldinlemcke.com](mailto:property@goldinlemcke.com)

The above information has been provided by the vendor in good faith, but will need verification by the purchaser's solicitor. Any areas, measurements or distances referred to are given as a guide only and are not precise. Floor plans are not drawn to scale and are provided only to help illustrate the general layout of the property. The mention of any appliances and/or services in this description does not imply that they are in full and efficient working order and prospective purchasers should make their own investigations before finalising any agreement to purchase. It should not be assumed that any contents, furnishings or other items shown in photographs (which may have been taken with a wide angle lens) are included in the sale. Any reference to alterations to, or use of, any part of the property is not a statement that the necessary planning, building regulations, listed buildings or other consents have been obtained. We endeavour to make our details accurate and reliable, but they should not be relied on as statements or representations of fact and they do not constitute any part of an offer or contract. The seller does not give any warranty in relation to the property and we have no authority to do so on their behalf.

Energy Efficiency Rating		
	Current	Potential
<i>Very energy efficient - lower running costs</i>		
(92 plus) <b>A</b>		
(81-91) <b>B</b>		
(69-80) <b>C</b>		
(55-68) <b>D</b>		
(39-54) <b>E</b>		
(21-38) <b>F</b>		
(1-20) <b>G</b>		
<i>Not energy efficient - higher running costs</i>		
<b>England &amp; Wales</b>	EU Directive 2002/91/EC	

SELLING HOMES  
IN BRIGHTON  
& HOVE  
SINCE 2002